

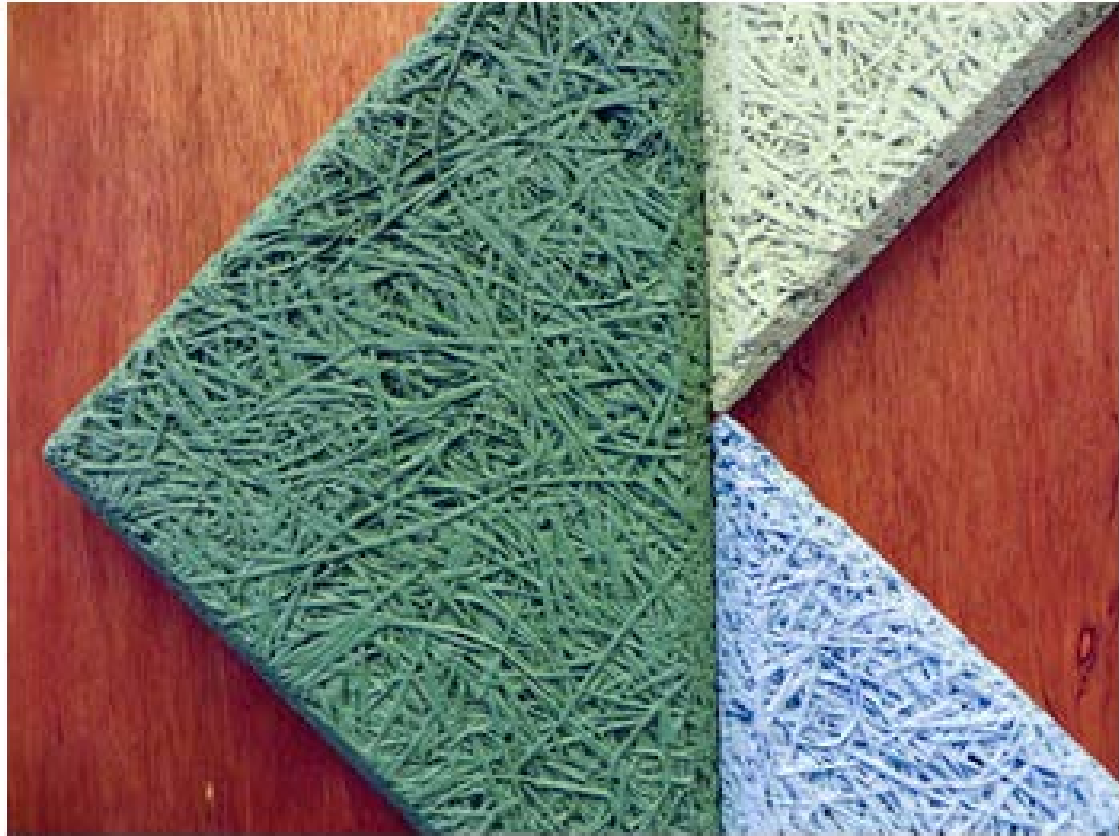
PRD 301 – Green Design
Materi 13



Marlene Huissoud uses insects and their waste streams as raw materials to make creations such as wooden leather and silkworm cocoons combined with biodegradable resin.



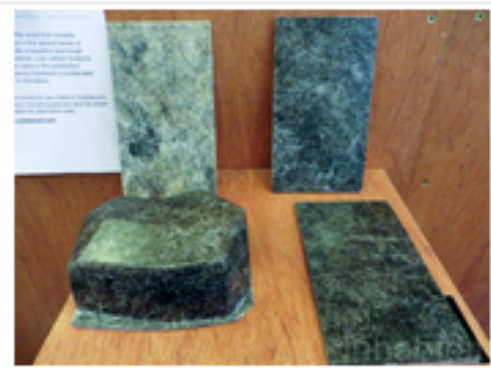
Spyros Kizis created cast bricks made from artichoke thistles and bio-resin from waste cooking oil. The artichoke head is combined with epoxy resin and then cast in a mold to achieve the desired shape.



The acoustic and thermal panels from Sweden's Baux are made of wood, wool and cement, natural components that are both environmentally friendly and recyclable.



Meital Tzabari designed beautiful panels made from pressed fallen leaves.



Solidwool collects wool from sheep farmed in the upland areas of the UK to create a beautiful and tough composite material. Low carbon footprint bio resins are used in the production process to make Solidwool a sustainable alternative to fibreglass.

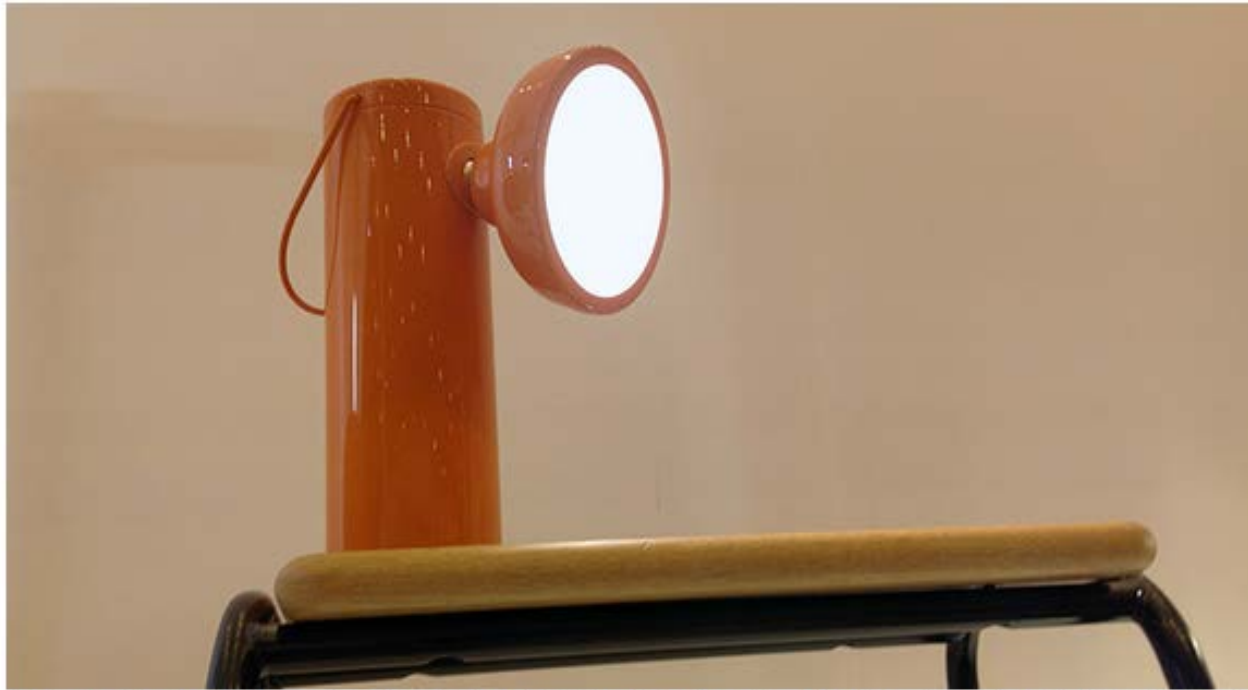


The result is MarinaTex, a bioplastic film made primarily from fish scales and skins and bound with an organic binder. Creating MarinaTex required a lot of trial and error, but the result is more than a polymer; MarinaTex is biodegradable plastic sheeting that is versatile and naturally decomposes in 4 to 6 weeks in a home **compost** environment.



Aiming to make Danish design affordable and accessible, Vita made a great show with their flat-packed lighting. The Eos pendant light (shown above), which comes in two sizes, is constructed of feathers on a paper core. The lamp shades are designed to be flat-packed for delivery to the customer, and then assembled at home in less than 15 minutes. Some of their designs, like the Silvia lamp, can be used as either a pendant, table or floor lamp, as the lights are sold without fittings for maximum flexibility.





The M Lamp, designed by Brit David Irwin for Brooklyn-based manufacturer Juniper, is touted as a wireless task lamp that can go anywhere. Inspired by a miner's lamp, the M Lamp is made of powder-coated aluminum and steel, and powered by an integrated rechargeable lithium iron phosphate battery. Currently on Kickstarter, the lamp sports a pivoting head and a handle for easy transport.



The Spun Furniture range of stools and tables by Hugh Leader-Williams, winner of the 100% Design Award at New Designers 2012, are designed for easy production, assembly and disassembly. The powder-coated spun steel tops are connected with magnets to the ash frame, so they can be easily removed. The wooden frames can also be taken apart without tools, for easy transport and storage.



You don't need screws or glue to put the Kurk cork desk light together, even though it comes flat-packed. Because it all comes apart, each component of the light can be recycled or reused.



Bye Bye Laundry is a concept by



Playing with the juxtaposition of oak, lacquered surfaces and ceramics, JIB Design Studio's Console O offers attractive and flexible storage. The ceramic pots are hand-thrown in London, and can either be used as planters or topped with oak lids for discrete storage of odds and ends. The console and coordinating credenza are hand-made in a workshop in Britain.



Klickity's accessories are designed and assembled in Ireland. The fig lamp, inspired by the traditional lantern shape, is made from 15 pieces of polypropylene, which come flat-packed. The lamp can be used with any standard pendant light fitting.



The hexagon shape of the sticky-backed Klip from Klickity allows you to create a modular bulletin board.