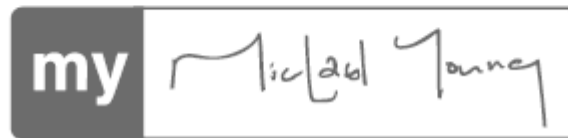


# INSTALASI, MATERIAL DAN RUANG



[www.michael-young.com](http://www.michael-young.com)

# INSTALASI, MATERIAL DAN RUANG

## Kanjian Creation

Triennale di Milano, Viale Alemagna, 6, 20121, Milano.

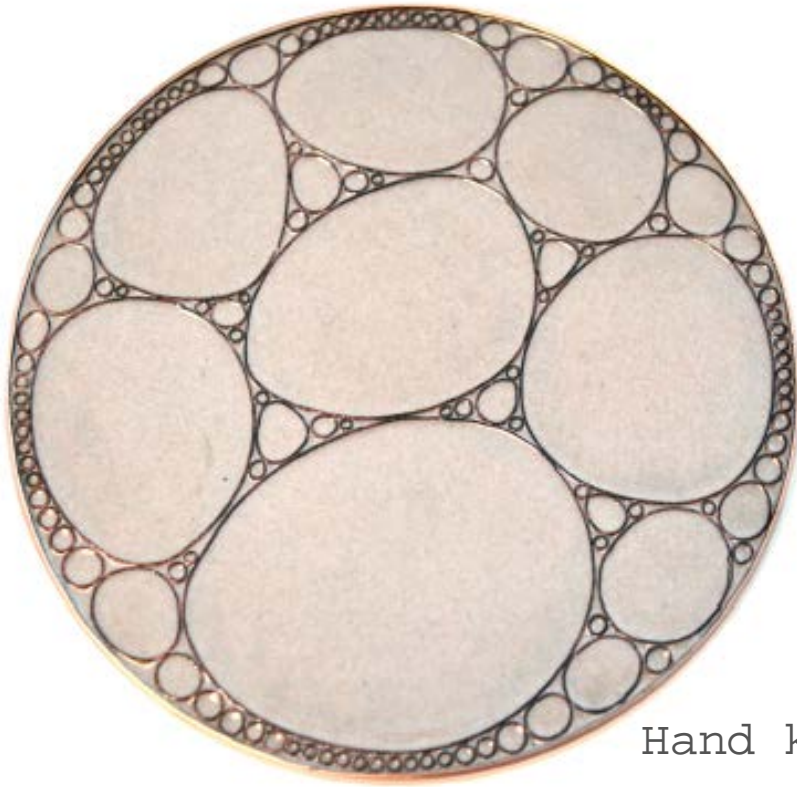
Tues - Sun 10.30 - 20.30

Thurs 10.30 - 23.00

Mon closed



# INSTALASI, MATERIAL DAN RUANG



This is a limited-edition artwork of Chinese craftsmanship especially made by KANJIAN. It was designed by Michael after his craft trip in China in 2013. The designs of the arose from the study of the Chinese traditional Cloisonné technique.

Hand knotted Tekke Rug, 2014



# INSTALASI, MATERIAL DAN RUANG



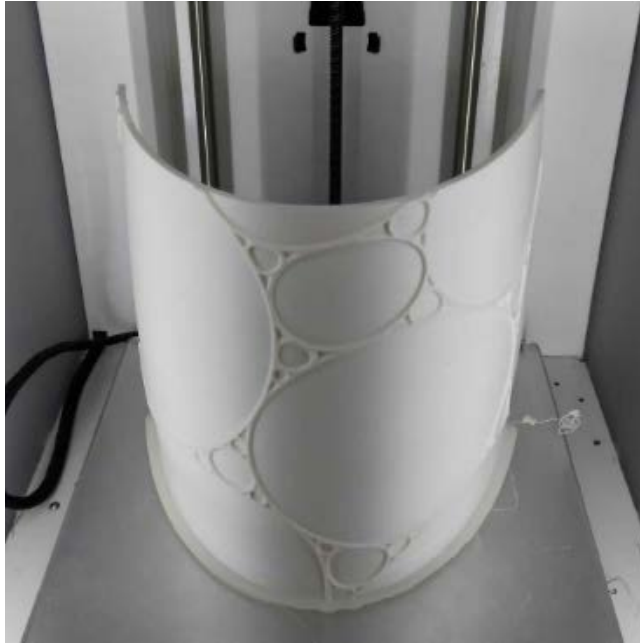
# INSTALASI, MATERIAL DAN RUANG



In order to turn these into three-dimensional reality, a 3-D printer was used to build male tools in Istanbul. From these, the factory must work purely by hand to maintain the delicate decorative lines prior to colouration.



# INSTALASI, MATERIAL DAN RUANG



GORBON Ceramics was founded in Istanbul Turkey in 1957 by Prof. Dr. Rebii Gorbon. GORBON has been the leading company in Turkish ceramics market producing decorative handmade tiles for interiors and exteriors ad also dinnerware and giftware items. Today the company is led by Orhan Gorbon representing the third generation. Currently, GORBON is working with designers and architects all over the world and creating custom walls and objects in ceramics utilizing Gorbon's full understanding of secrets of the unique colours and the durability of the tiles. Michael was responsible for rebranding the company and producing a range of commercial wall tiles and objects.

# INSTALASI, MATERIAL DAN RUANG



# INSTALASI, MATERIAL DAN RUANG





# INSTALASI, MATERIAL DAN RUANG



The collection consists of a chair, a side table, a writing desk, a round coffee table, a console and a lounge chair. All the work in the collection will be composed of polished stainless steel with white enamel surfaces. Each piece consists of a cluster of hollow metal extrusions capped at each end and covered with enamel.



# INSTALASI, MATERIAL DAN RUANG



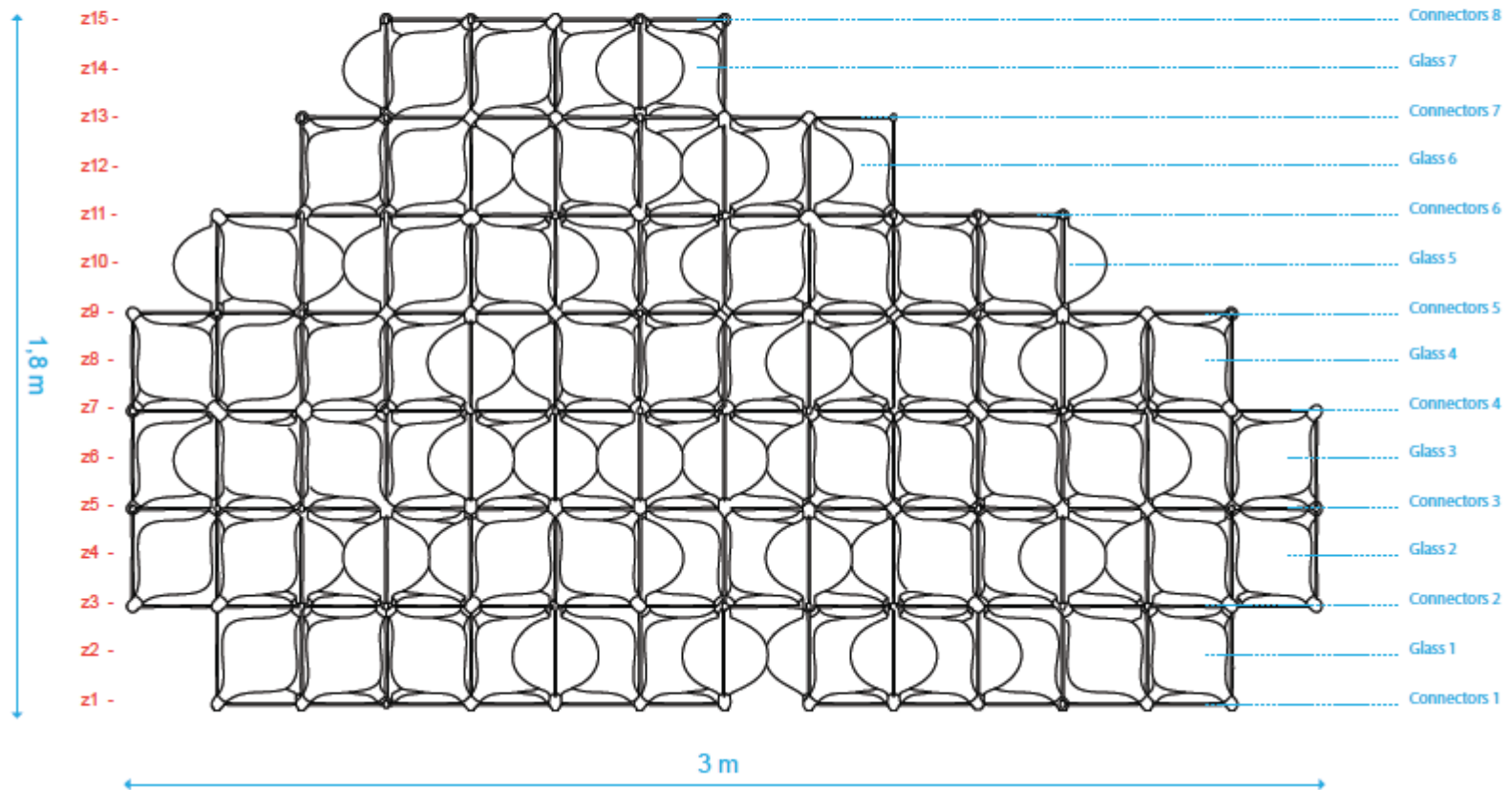
# INSTALASI, MATERIAL DAN RUANG



# INSTALASI, MATERIAL DAN RUANG

## Cloud (side)

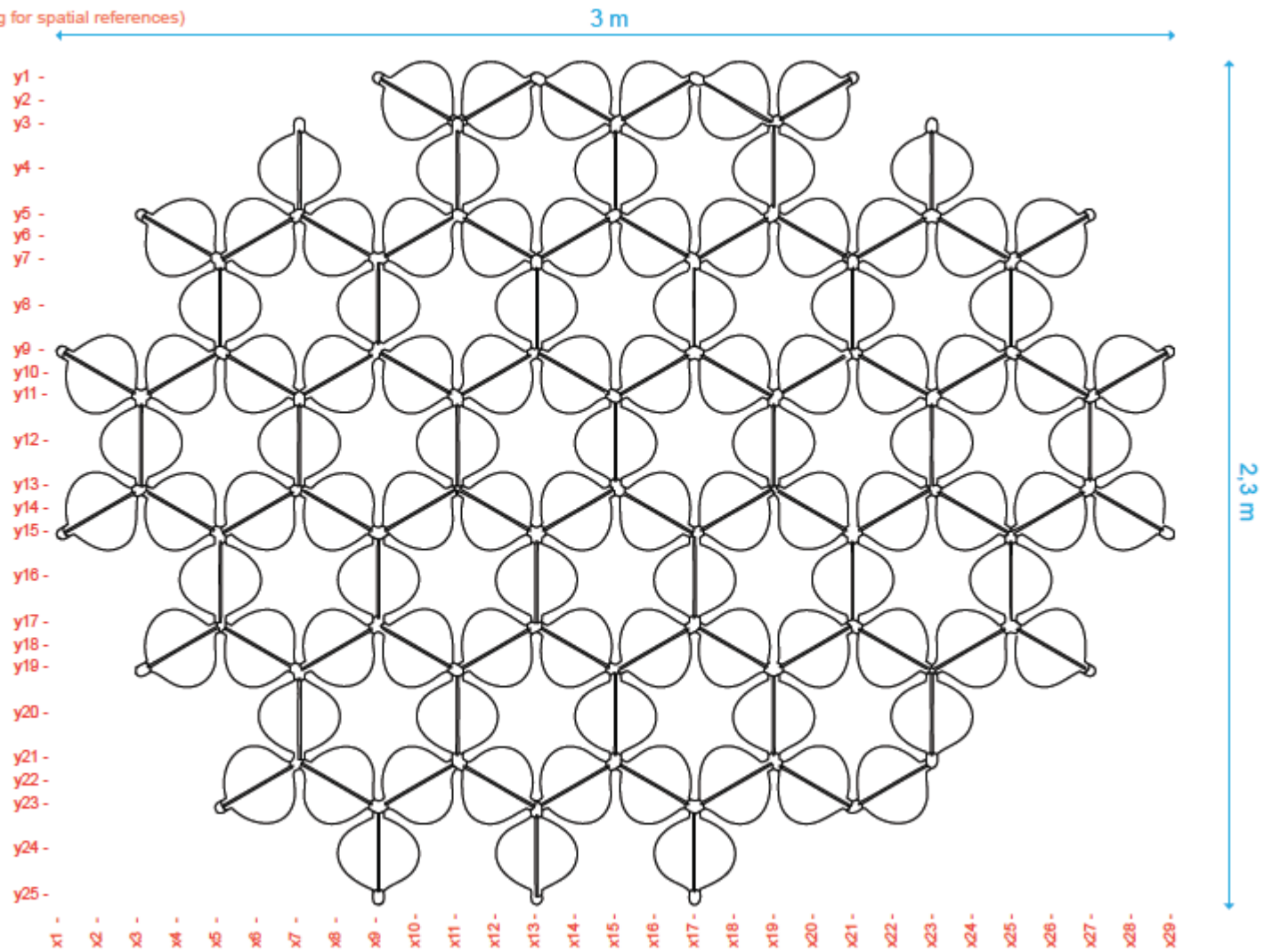
(x1y1z1 naming for spatial references)



# INSTALASI, MATERIAL DAN RUANG

## Cloud (top)

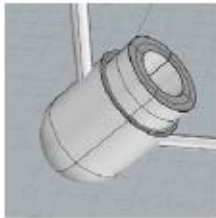
(x1y1z1 naming for spatial references)



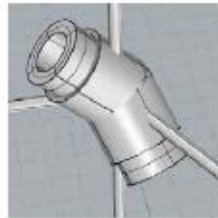


# INSTALASI, MATERIAL DAN RUANG

Connectors, look and naming



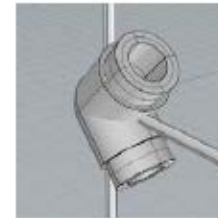
A--/--



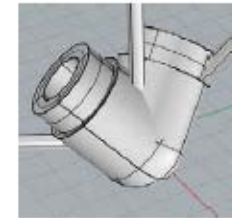
A--/--Z



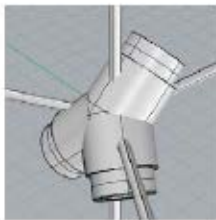
A--/--Y-



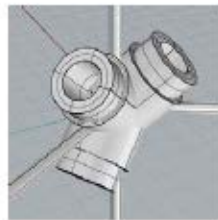
A--/--X--



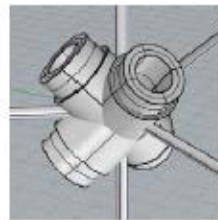
AB--/--



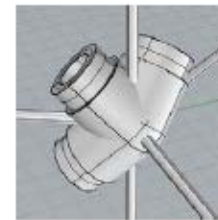
AB--/--Z



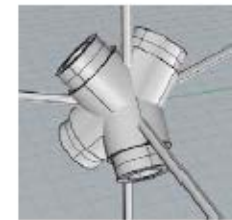
AB--/--Y-



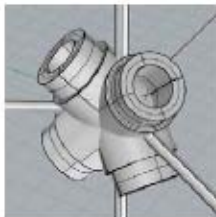
AB--/--YZ



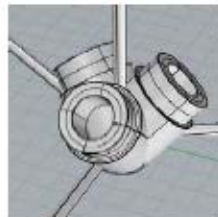
AB--/--X--



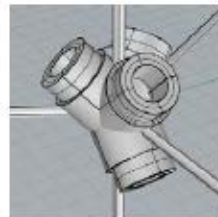
AB--/--X-Z



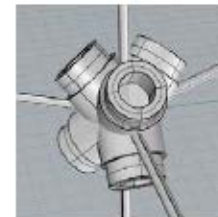
AB--/--XY-



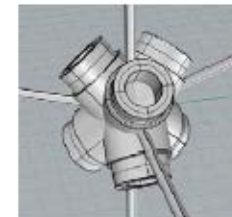
ABC--/--



ABC--/--X--



ABC--/--XY-



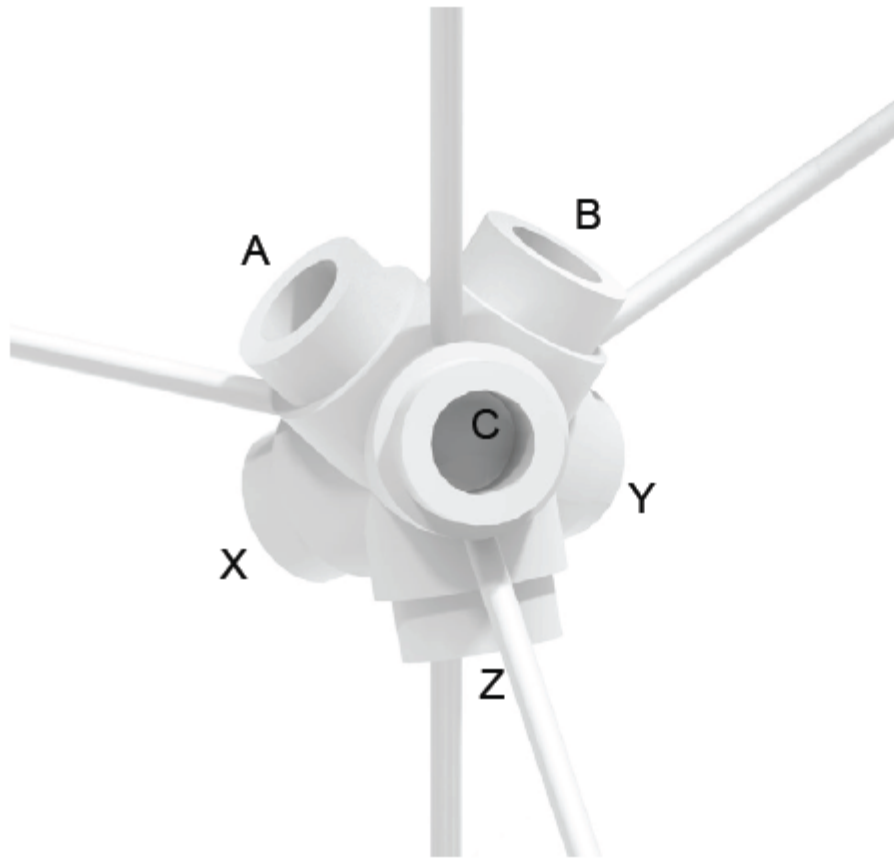
ABC--/--XYZ

# INSTALASI, MATERIAL DAN RUANG

Cloud

Connector Naming:

ABC/XYZ

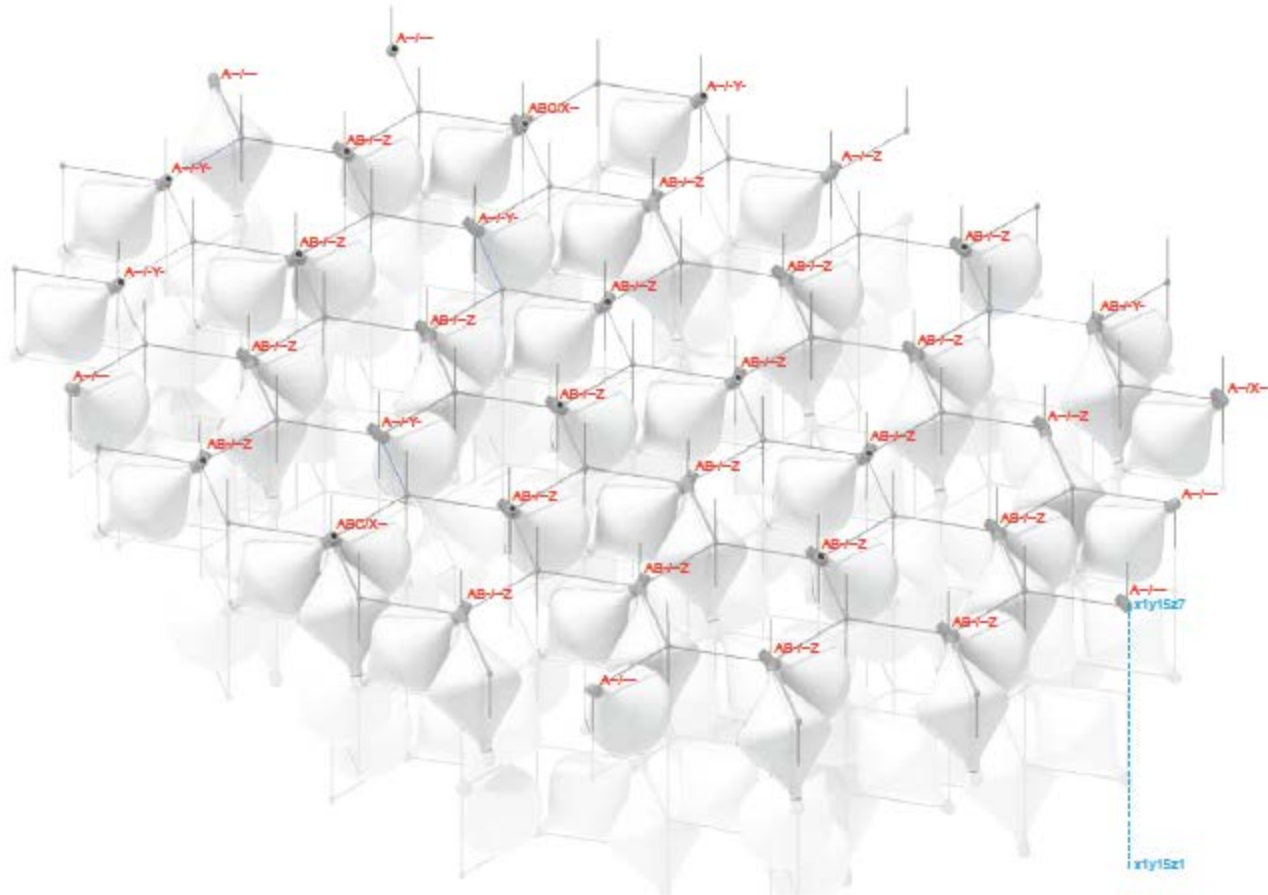


Connector count

A-/-	58
A-/X-	4
A-/Y-	15
A-/Z-	16
AB-/-	27
AB-/X-	4
AB-/Y-	2
AB-/Z-	76
AB-/YZ	4
AB-/X-Z	3
ABC-/-	4
ABC/X-	4
ABC/XY-	1

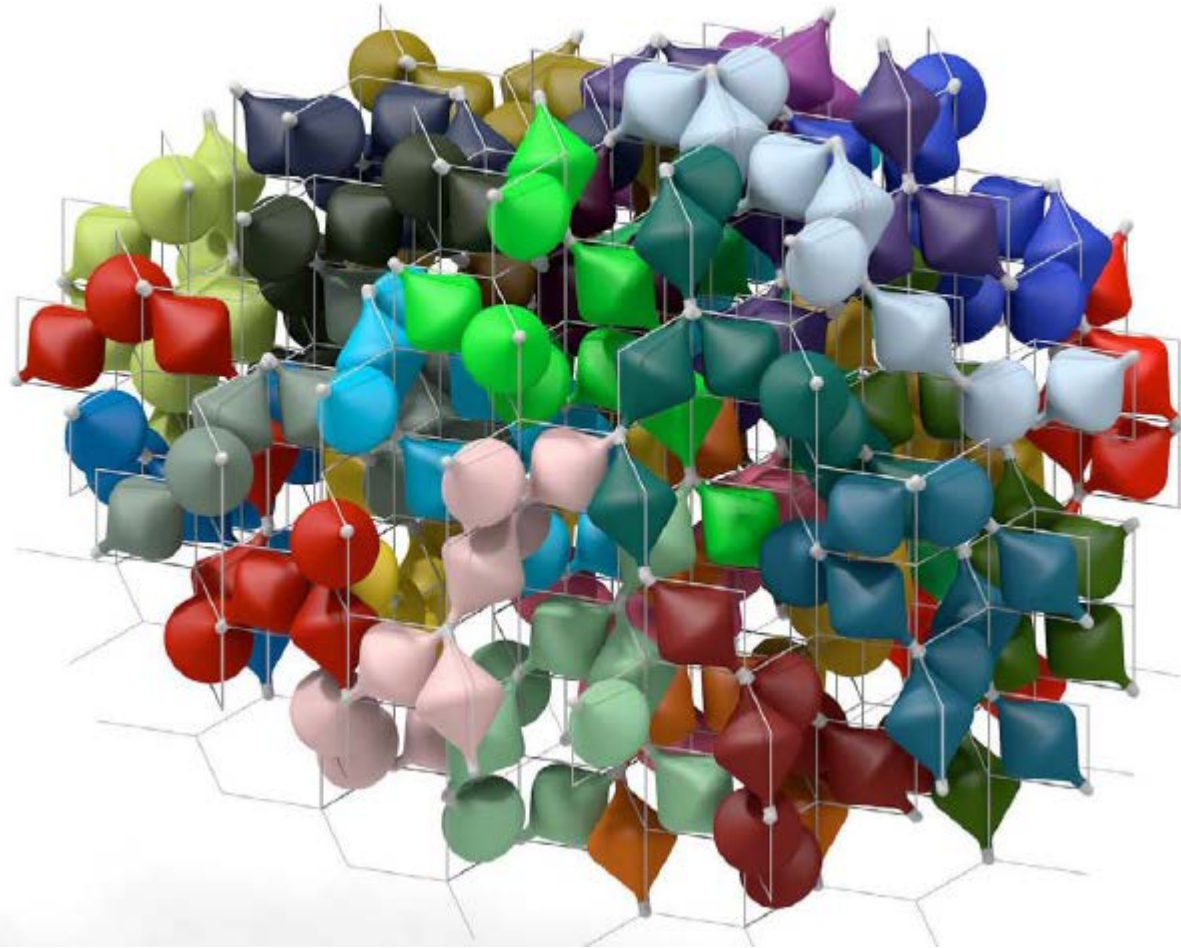
# INSTALASI, MATERIAL DAN RUANG

Cloud  
Glass 3 <sup>26</sup>  
Connectors 4 <sup>27</sup>



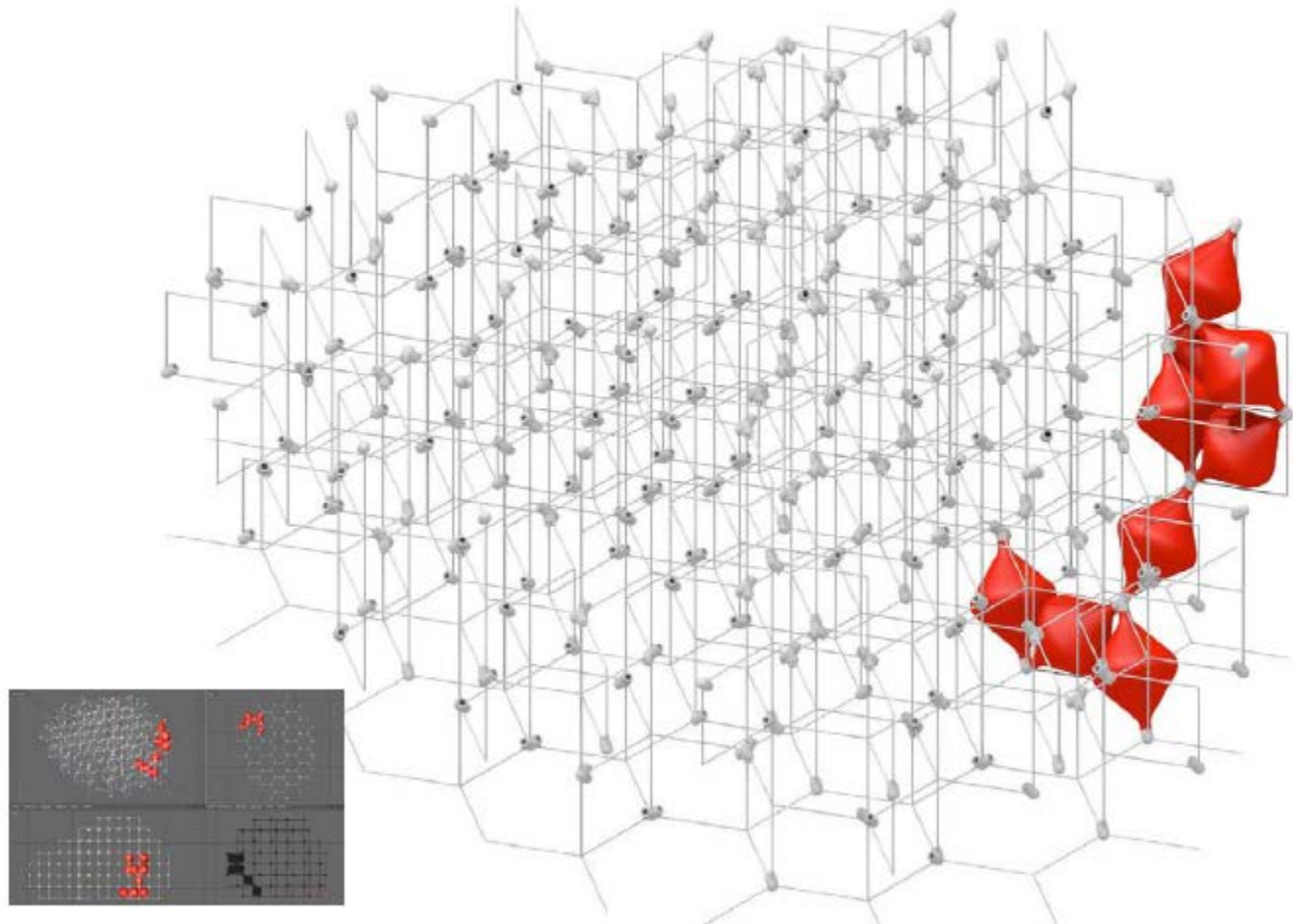
# INSTALASI, MATERIAL DAN RUANG

Cloud  
Glass Layer 7  
With groups



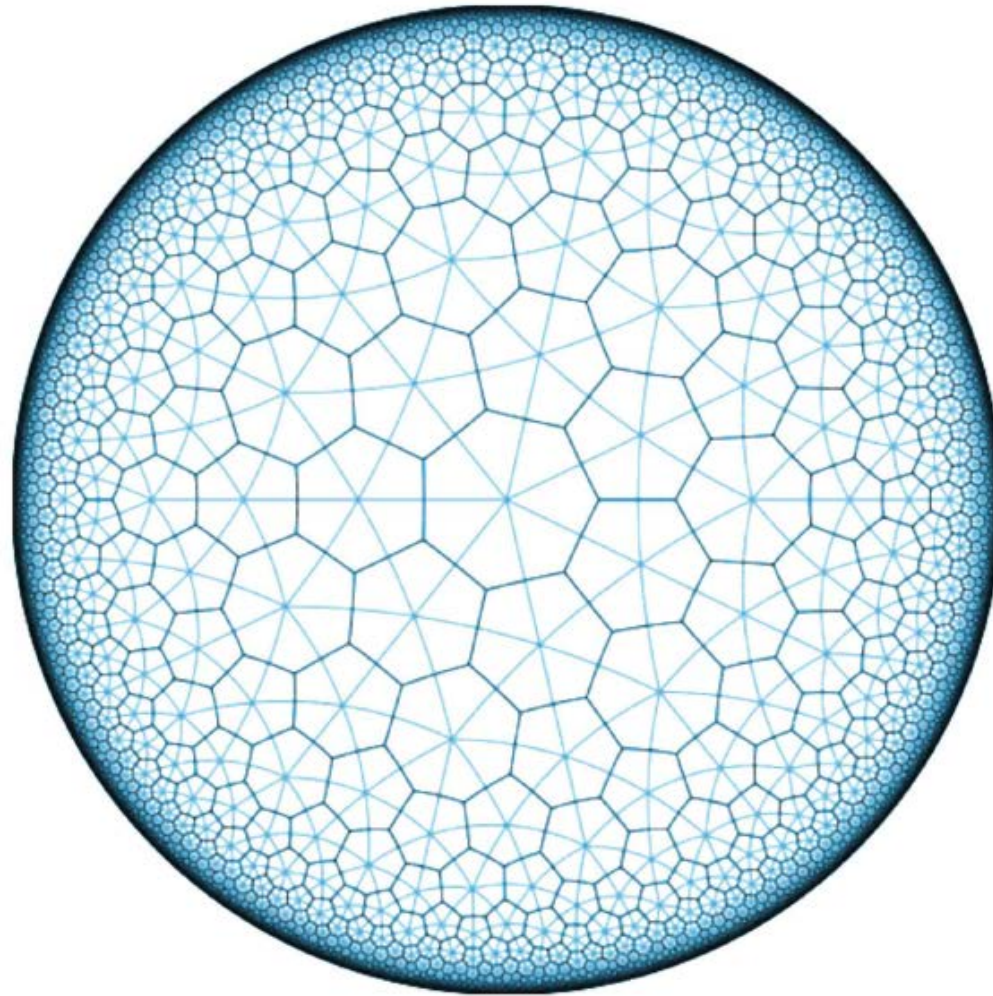
# INSTALASI, MATERIAL DAN RUANG

Cloud  
Group 1

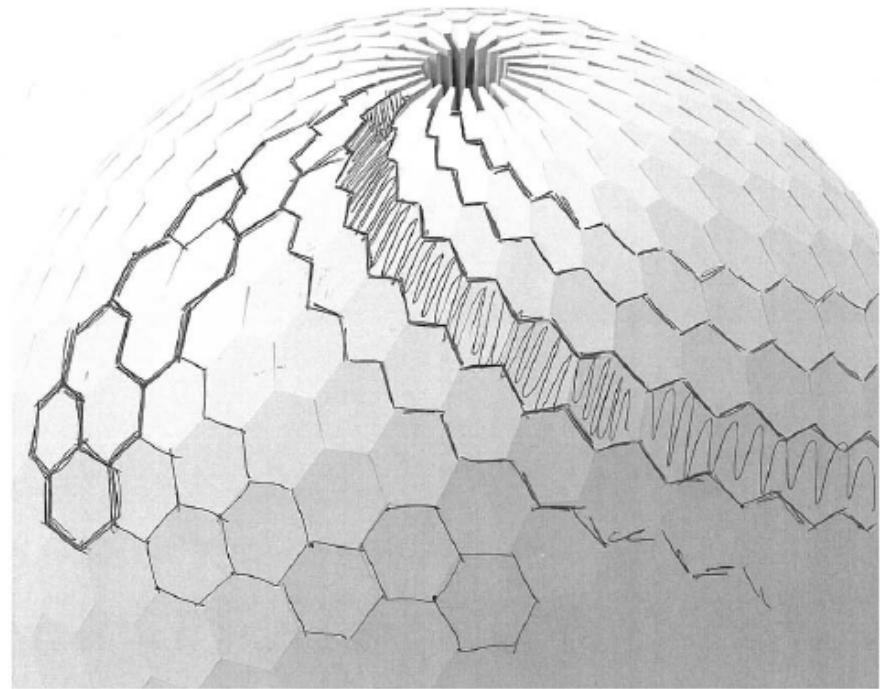
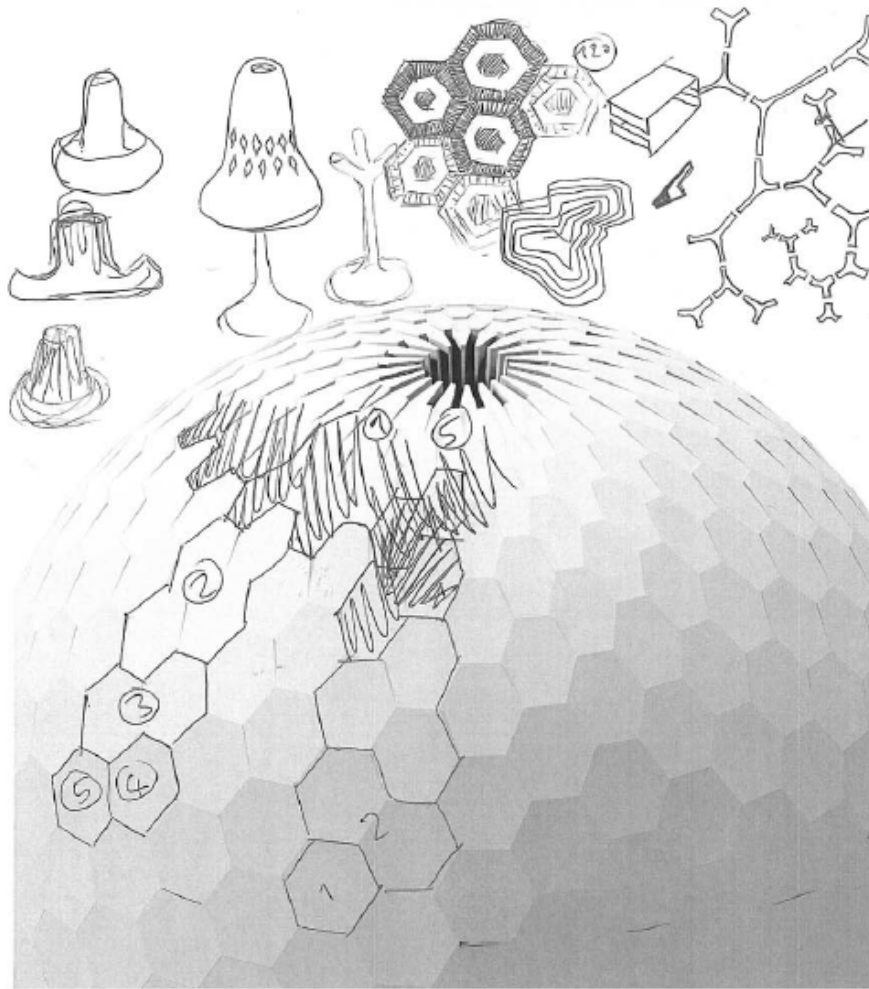




# INSTALASI, MATERIAL DAN RUANG



# INSTALASI, MATERIAL DAN RUANG



# INSTALASI, MATERIAL DAN RUANG

## Hyperbolic Extension



Vase Size x 3



Table



Table



Wallpiece x 2



Bench x 2 size



REMOVE

## 3D Fractals



Vase Vase x 3



Wallpiece



Table



Bowl plate

1 x Bowl  
2 x Plate



## Pixelated Chabs



Wave



Bowl

## Shells



Vase



Plate



Wallpiece

technology?



Stool



## Misc



bull's head



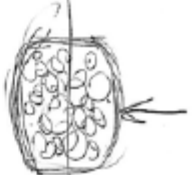
dragon egg



foamed stool

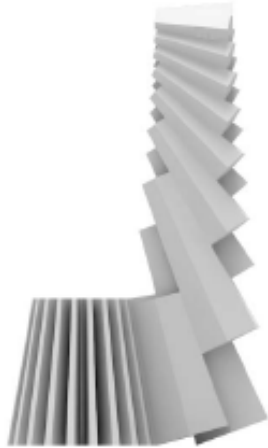
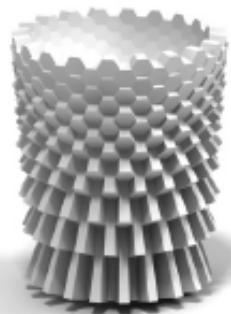


Glass marble



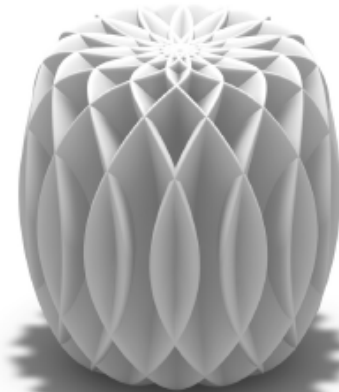
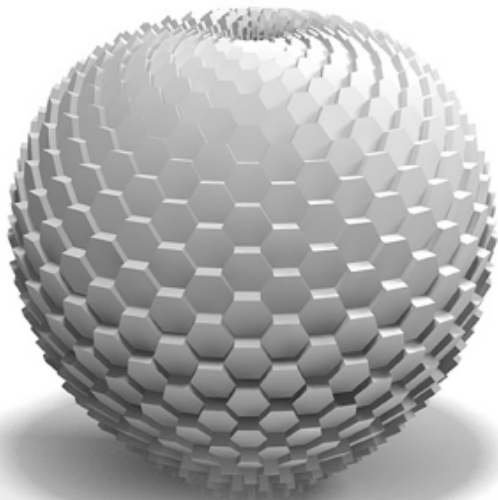
3 x 4 x real  
construction

# INSTALASI, MATERIAL DAN RUANG



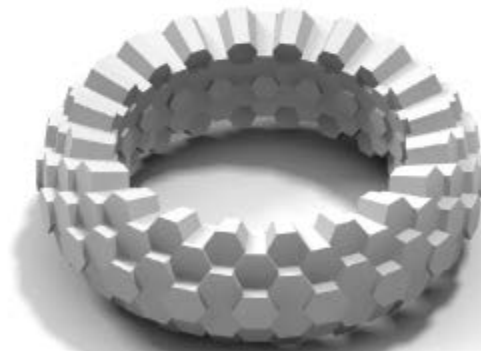


# INSTALASI, MATERIAL DAN RUANG





# INSTALASI, MATERIAL DAN RUANG



# INSTALASI, MATERIAL DAN RUANG

