

# ***PENGEMBANGAN DENAH, POTONGAN, TAMPAK***



PERTEMUAN MINGGU 13

PERANCANGAN ARSITEKTUR 5

# ALIBABA HEADQUARTERS by Hassell



总平面  
Master Layout Plan



Master plan

Sumber:  
<http://www.archdaily.com/118277/alibaba-headquarters-hassell/>, 2014



- 1 入口广场  
Arrival Plaza
- 2 阿里巴巴公共区  
ALI Commons
- 3 办公庭院  
Office courtyard
- 4 信息领域  
Information Field
- 5 服务通道  
Service Road
- 6 多功能运动场  
Multi-purpose Sport Court
- 7 乒乓球  
Tennis Court
- 8 跑道  
Running track
- 9 建筑水体  
Structural Water body
- 10 绿化带  
Green Belt
- 11 屋顶平台  
Roof Terrace





## Elevation

Sumber:

<http://www.archdaily.com/118277/alibaba-headquarters-hassell/>, 2014

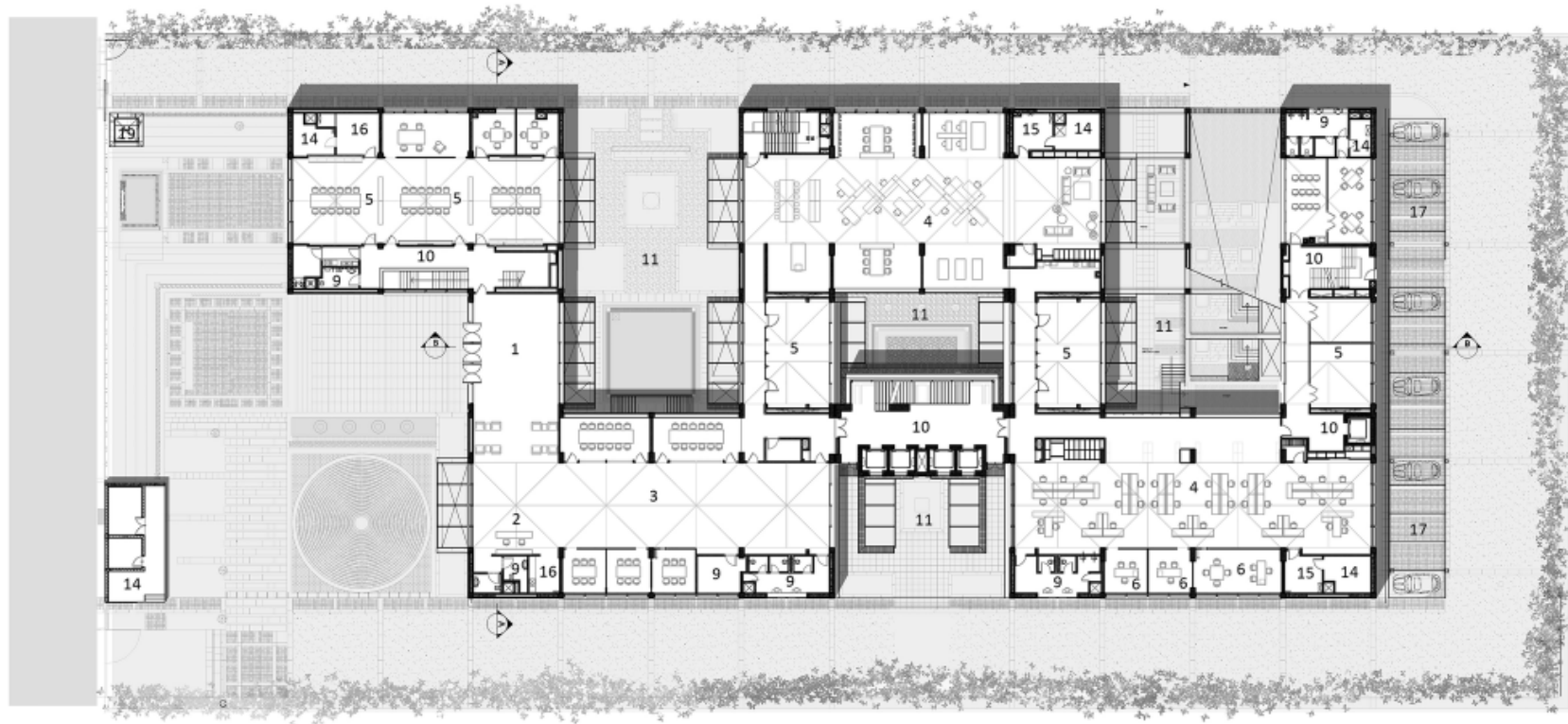
# TRIBURG HEADQUARTERS

by S.P.A Design



Sumber:

<http://www.archdaily.com/576334/triburg-headquarters-s-p-a-design/>,  
2014

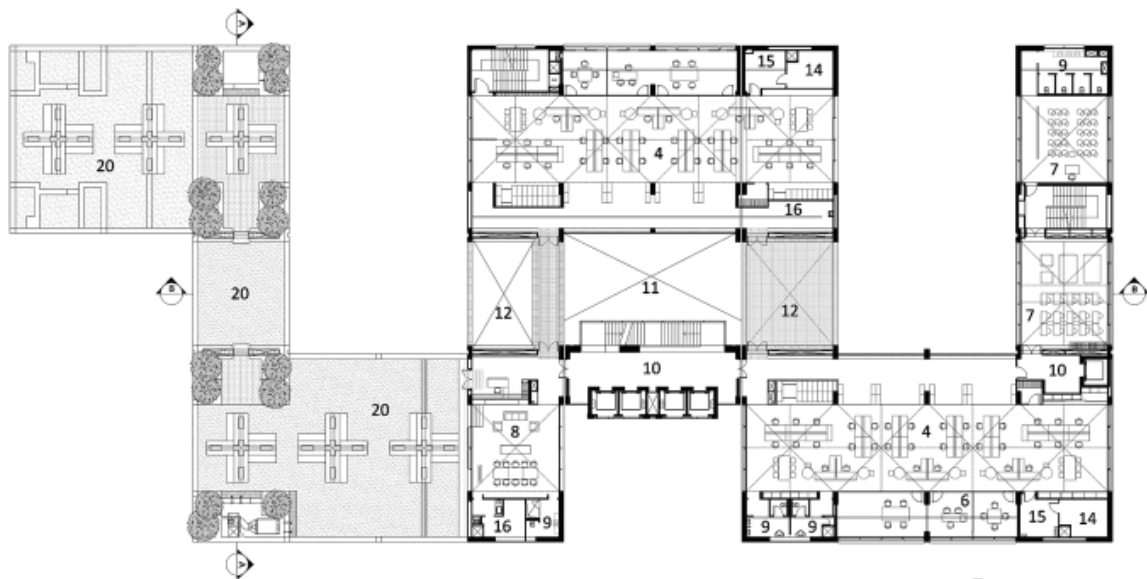


**LEGEND**

- |                            |                           |
|----------------------------|---------------------------|
| 1. ENTRANCE LOBBY          | 11. COURT                 |
| 2. RECEPTION               | 12. DOUBLE HEIGHT TERRACE |
| 3. SHOWROOM                | 13. PASSAGE               |
| 4. WORKING HALL            | 14. SERVICE AREA          |
| 5. CONFERENCE ROOM         | 15. COPY ROOM             |
| 6. CABIN                   | 16. PANTRY                |
| 7. CLASSROOM               | 17. SURFACE PARKING       |
| 8. OFFICE SPACE            | 18. BASEMENT PARKING      |
| 9. TOILET                  | 19. GUARD ROOM            |
| 10. LIFT / STAIRCASE LOBBY | 20. TERRACE GARDEN        |

0 5m

GROUND FLOOR PLAN



0 5m

THIRD FLOOR PLAN

**LEGEND**

- |                            |                           |
|----------------------------|---------------------------|
| 1. ENTRANCE LOBBY          | 11. COURT                 |
| 2. RECEPTION               | 12. DOUBLE HEIGHT TERRACE |
| 3. SHOWROOM                | 13. PASSAGE               |
| 4. WORKING HALL            | 14. SERVICE AREA          |
| 5. CONFERENCE ROOM         | 15. COPY ROOM             |
| 6. CABIN                   | 16. PANTRY                |
| 7. CLASSROOM               | 17. SURFACE PARKING       |
| 8. OFFICE SPACE            | 18. BASEMENT PARKING      |
| 9. TOILET                  | 19. GUARD ROOM            |
| 10. LIFT / STAIRCASE LOBBY | 20. TERRACE GARDEN        |



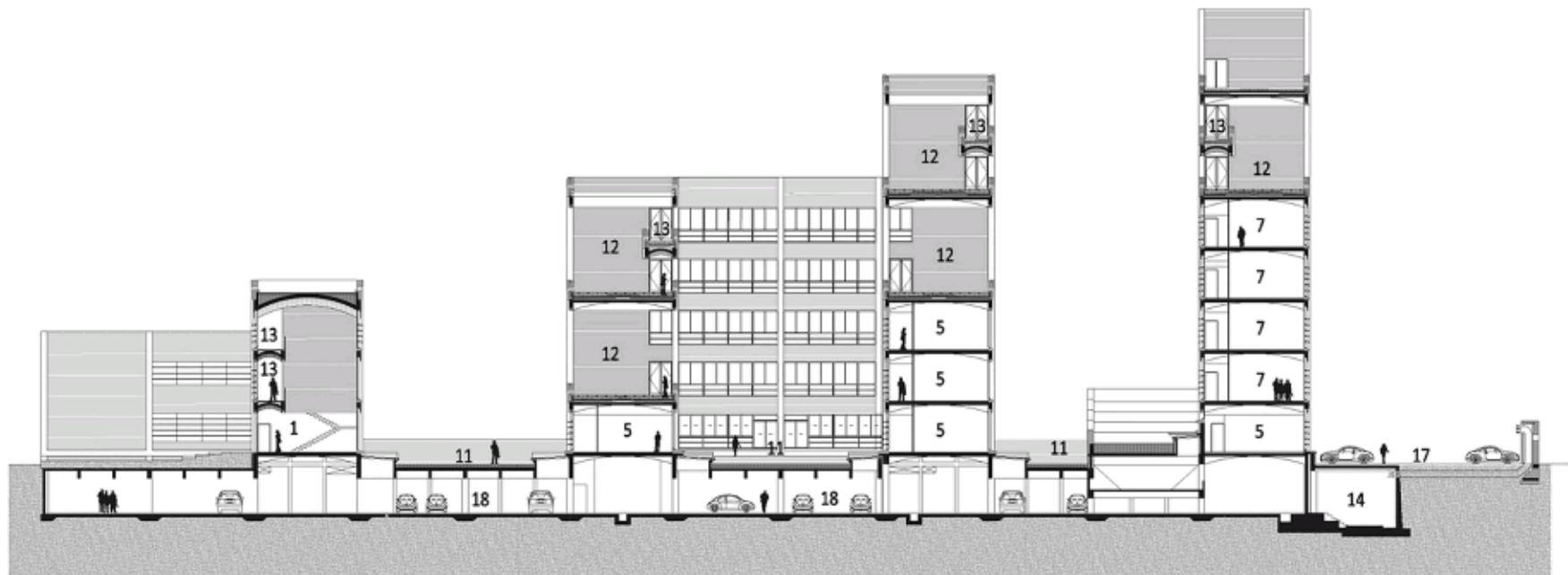


**LEGEND**

1. ENTRANCE LOBBY
2. RECEPTION
3. SHOWROOM
4. WORKING HALL
5. CONFERENCE ROOM
6. CABIN
7. CLASSROOM
8. OFFICE SPACE
9. TOILET
10. LIFT / STAIRCASE LOBBY
11. COURT
12. DOUBLE HEIGHT TERRACE
13. PASSAGE
14. SERVICE AREA
15. COPY ROOM
16. PANTRY
17. SURFACE PARKING
18. BASEMENT PARKING
19. GUARD ROOM
20. TERRACE GARDEN

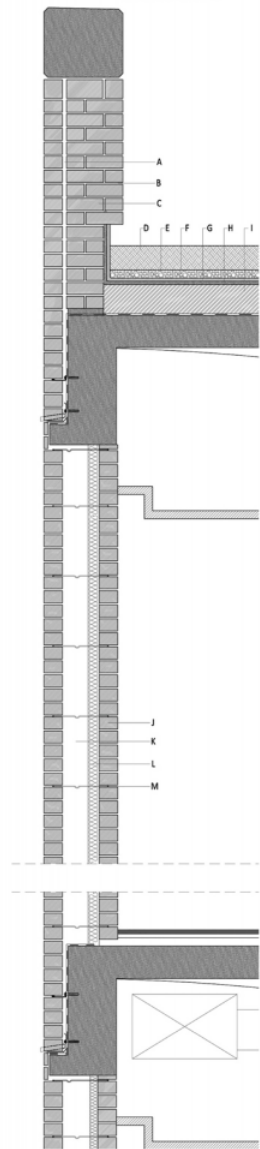
0 5m

SECTION AA



0 5m  
SECTION BB

FAÇADE SECTION 1



**LEGEND**

**EXPOSED BRICKWALL MADE OF**

- A 115mm brick wall
- B 35mm gap
- C 345mm full exposed brickwall

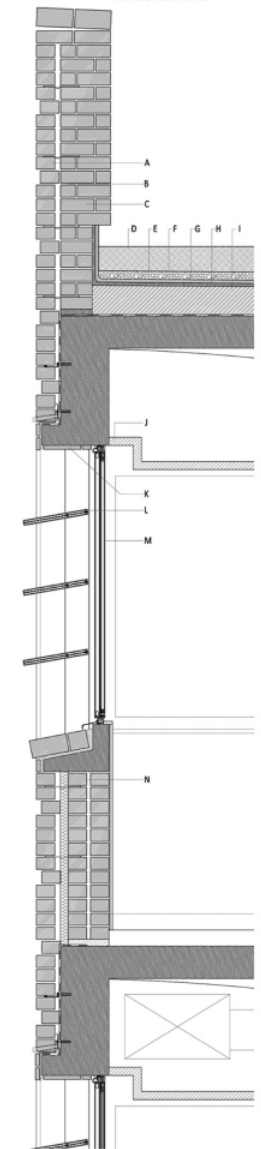
**TERRACE GARDEN MADE OF**

- D 150mm sweet earth.
- E Geotextile as per specs.
- F 50mm thk. layer of round pebbles.
- G 20mm kota stone.
- H 20mm mortar.
- I Brick bat coba(Laid in slope).

- J POP false ceiling
- K Brick tile 25mm thk.
- L Louvers 400mm wide with SS fittings
- M Aluminium sliding windows
- N Double wall in brick



FAÇADE SECTION 2



**LEGEND**

**EXPOSED BRICKWALL MADE OF**

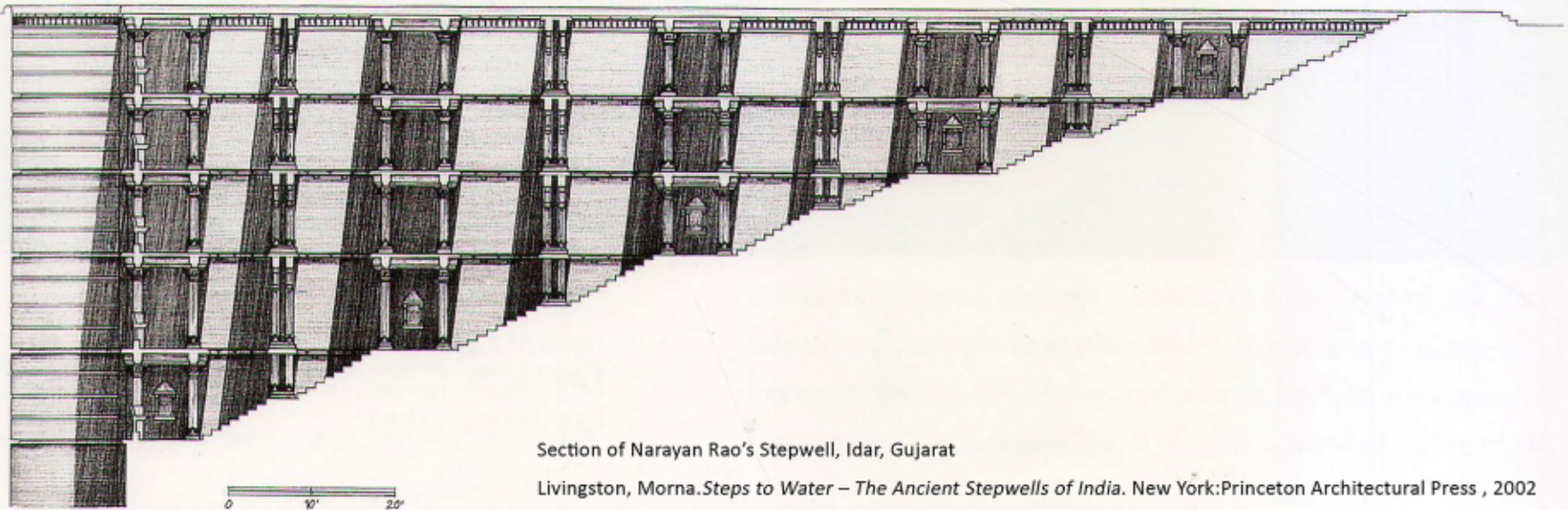
- A 115mm brick wall
- B 35mm gap
- C 345mm full exposed brickwall

**TERRACE GARDEN MADE OF**

- D 150mm sweet earth.
- E Geotextile as per specs.
- F 50mm thk. layer of round pebbles.
- G 20mm kota stone.
- H 20mm mortar.
- I Brick bat coba(Laid in slope).

- J POP false ceiling
- K Brick tile 25mm thk.
- L Louvers 400mm wide with SS fittings
- M Aluminium sliding windows
- N Double wall in brick





Section of Narayan Rao's Stepwell, Idar, Gujarat

Livingston, Morna. *Steps to Water – The Ancient Stepwells of India*. New York: Princeton Architectural Press, 2002