

PENYUSUNAN PROGRAM RUANG & TIPE KEGIATAN

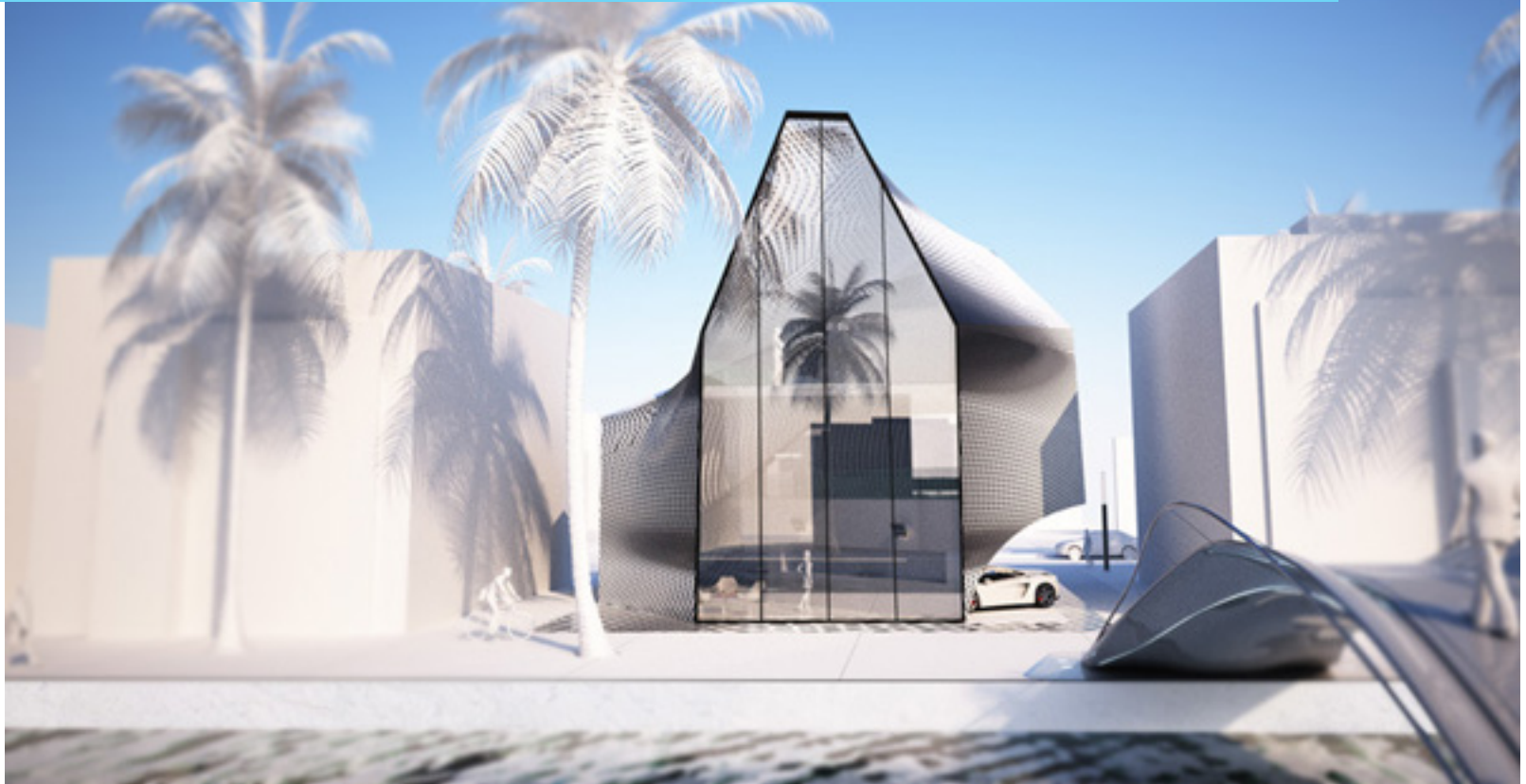


PERTEMUAN MINGGU 2

PERANCANGAN ARSITEKTUR 5

LOFTED TYPOLOGIES GENERATE GRADIENT RESIDENCE

by Volkan Alkanoglu





L.01

**BLOCK** - mass volume

Block is a simple, solid, three-dimensional form. It is a fundamental building element that can be used to create a wide range of architectural forms. It is often used to create a sense of mass and volume, and can be used to define a space or to create a focal point in a design.

L.02

**CANTILEVER** - overhang

A cantilever is a structural element that is fixed at one end and free at the other. It is often used to create a sense of lightness and to define a space. It can be used to create a focal point in a design or to create a sense of movement and flow.

L.03

**POCHE** - space

A poche is a recessed or indented part of a building's facade. It is often used to create a sense of depth and to define a space. It can be used to create a focal point in a design or to create a sense of movement and flow.

L.04

**VAULT** - span

A vault is a curved, arched structure that is supported by two or more points. It is often used to create a sense of height and to define a space. It can be used to create a focal point in a design or to create a sense of movement and flow.

L.05

**DOME** - sphere

A dome is a rounded, hemispherical structure that is supported by a circular base. It is often used to create a sense of height and to define a space. It can be used to create a focal point in a design or to create a sense of movement and flow.



L.06

**PLINTH** - base

A plinth is a raised, rectangular base for a column or a pedestal. It is often used to create a sense of height and to define a space. It can be used to create a focal point in a design or to create a sense of movement and flow.

L.07

**TEMPLE** - sanctity

A temple is a building that is used for religious or spiritual purposes. It is often used to create a sense of height and to define a space. It can be used to create a focal point in a design or to create a sense of movement and flow.

L.08

**THEATRE** - show

A theatre is a building that is used for entertainment or performance. It is often used to create a sense of height and to define a space. It can be used to create a focal point in a design or to create a sense of movement and flow.

L.09

**ATRIUM** - open space

An atrium is a large, open space that is often used for public or commercial purposes. It is often used to create a sense of height and to define a space. It can be used to create a focal point in a design or to create a sense of movement and flow.

L.10

**STOA** - public hallway

A stoa is a long, narrow, covered walkway or public hallway. It is often used to create a sense of height and to define a space. It can be used to create a focal point in a design or to create a sense of movement and flow.



L.11

**VOID** - absence

A void is a space that is defined by the absence of a solid form. It is often used to create a sense of height and to define a space. It can be used to create a focal point in a design or to create a sense of movement and flow.

L.12

**PYRAMID** - triangular

A pyramid is a three-dimensional shape with a square or rectangular base and four triangular sides that meet at a single point. It is often used to create a sense of height and to define a space. It can be used to create a focal point in a design or to create a sense of movement and flow.

L.13

**CHURCH** - worship

A church is a building that is used for religious or spiritual purposes. It is often used to create a sense of height and to define a space. It can be used to create a focal point in a design or to create a sense of movement and flow.

L.14

**DOMINO** - flexible

A domino is a small, rectangular block that is often used in architecture to create a sense of height and to define a space. It can be used to create a focal point in a design or to create a sense of movement and flow.

L.15

**GATE** - entry

A gate is a structure that is used to control access to a building or a space. It is often used to create a sense of height and to define a space. It can be used to create a focal point in a design or to create a sense of movement and flow.



L.16

**COURTYARD** - meeting

A courtyard is a small, open space that is often used for public or commercial purposes. It is often used to create a sense of height and to define a space. It can be used to create a focal point in a design or to create a sense of movement and flow.

L.17

**BAR** - support

A bar is a structure that is used to support a load or to define a space. It is often used to create a sense of height and to define a space. It can be used to create a focal point in a design or to create a sense of movement and flow.

L.18

**TOWER** - height

A tower is a tall, narrow structure that is often used to create a sense of height and to define a space. It can be used to create a focal point in a design or to create a sense of movement and flow.

L.19

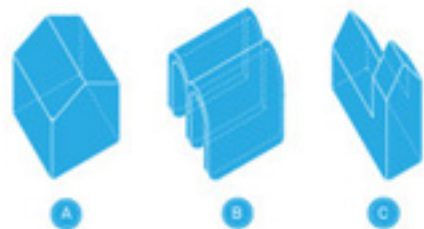
**VILLA** - upper class

A villa is a large, luxurious house that is often used to create a sense of height and to define a space. It can be used to create a focal point in a design or to create a sense of movement and flow.

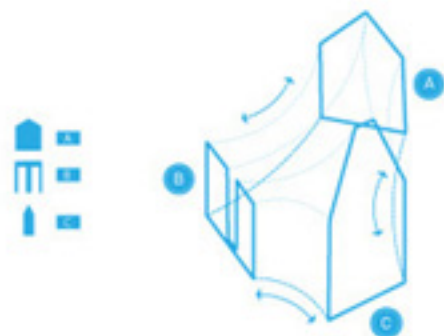
L.20

**HOUSE** - habitation

A house is a building that is used for habitation. It is often used to create a sense of height and to define a space. It can be used to create a focal point in a design or to create a sense of movement and flow.



Typology Components



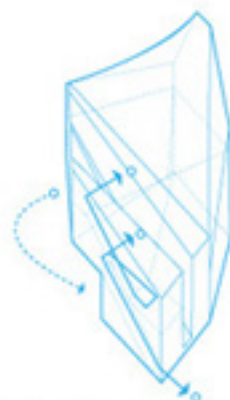
Profiles lofted



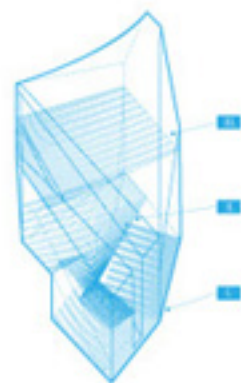
Aperture Study



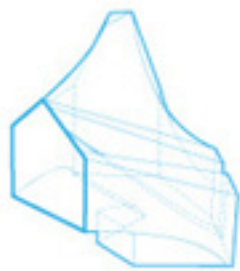
Opacity Study



Circulation / Access



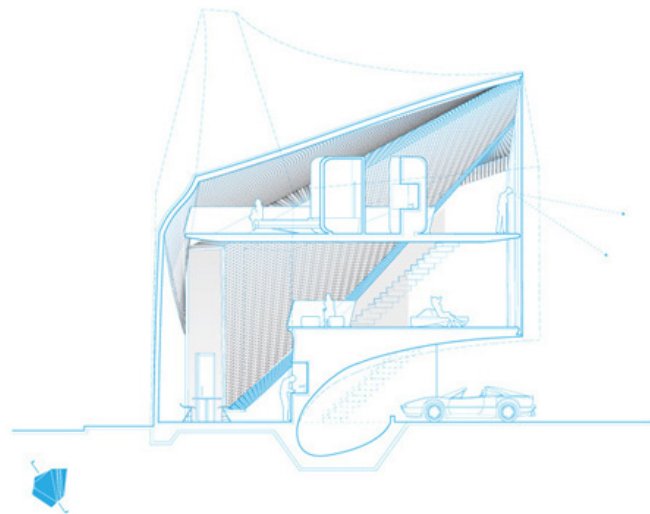
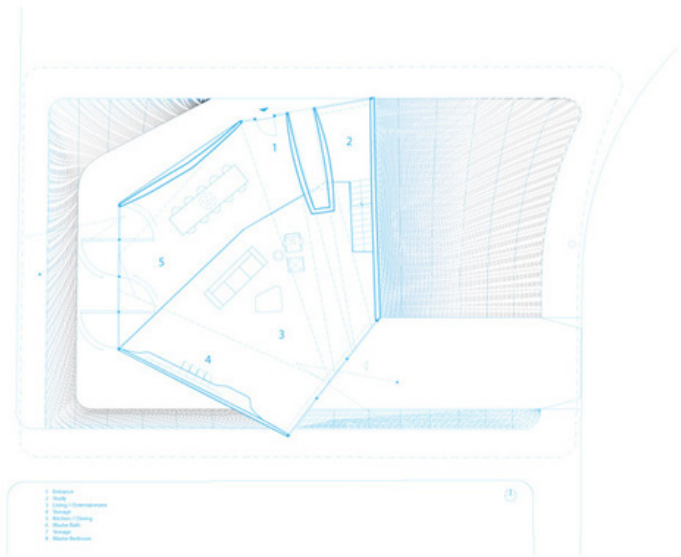
Program Distribution



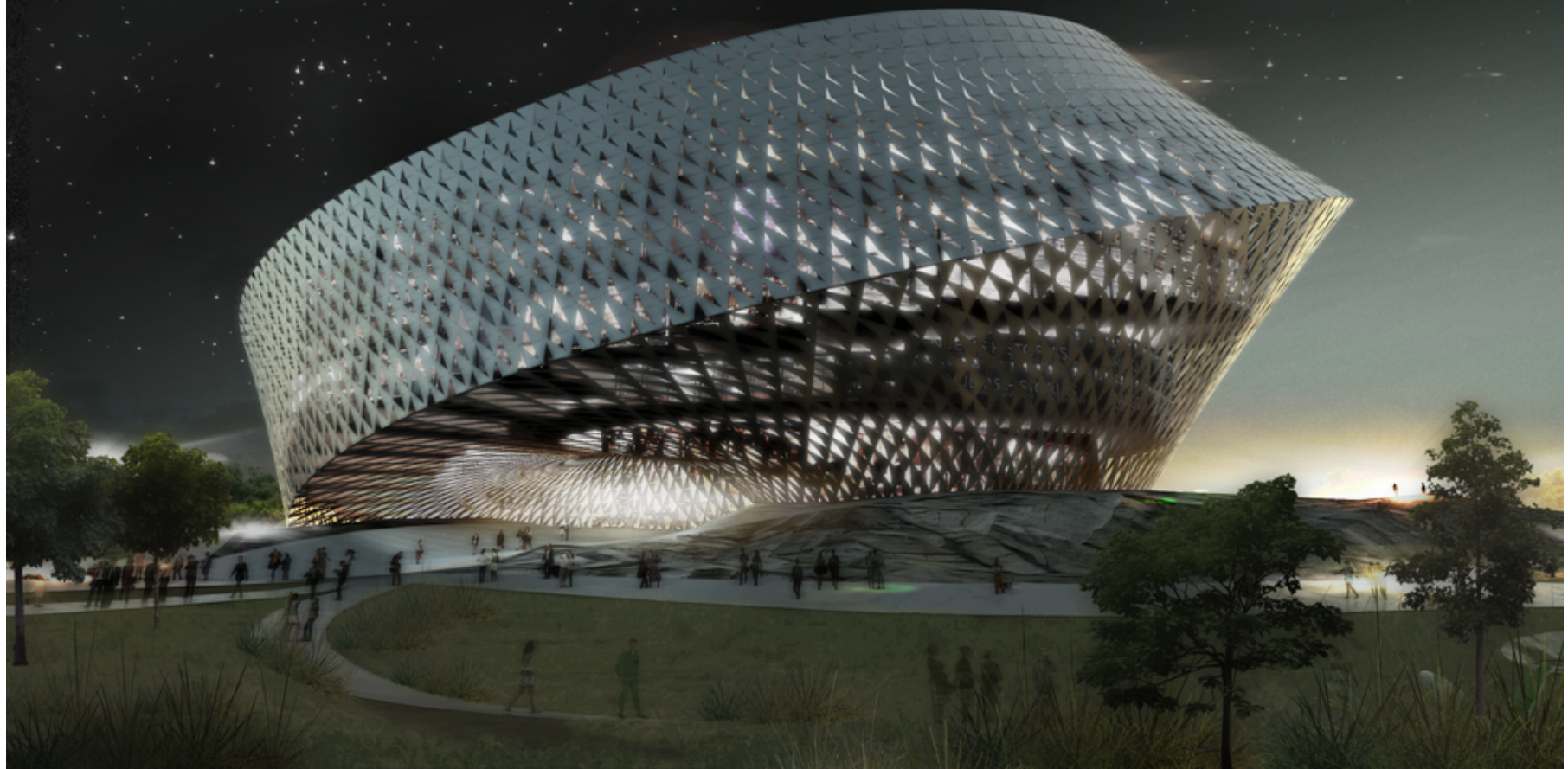
Massing Study



Contour Study

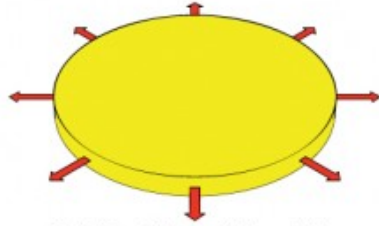


ASTANA NATIONAL LIBRARY
by BIG

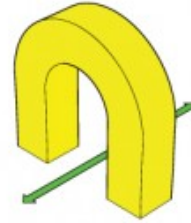




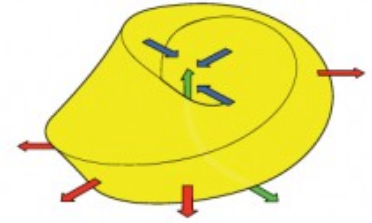
Rotunda



Circle (Great Library of Alexandria)



Arch (Arc de Triomphe)



Rotunda + Disk + Archway = Möbius strip



Public Function



Public Place



Exhibition Hall



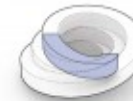
Reading Rooms



Open Bookshelves



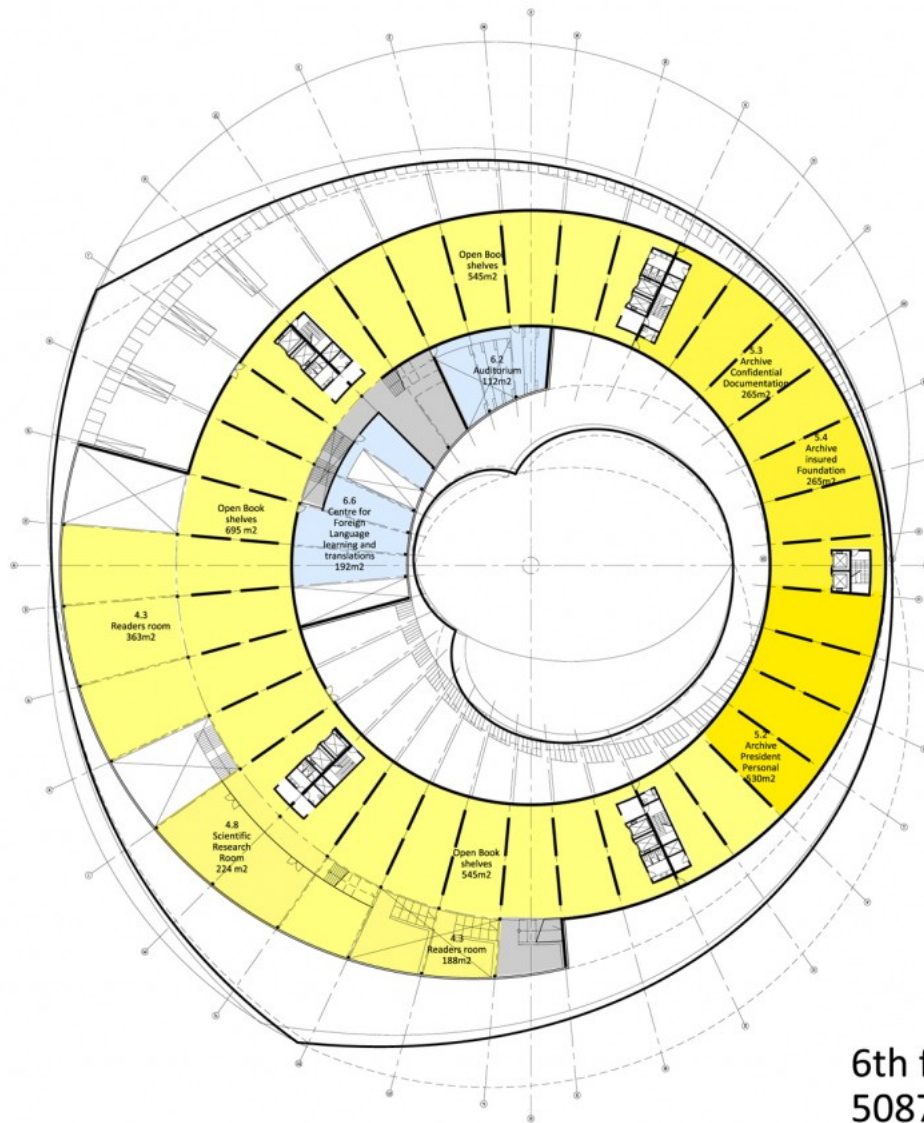
Archive



Scientific Research Room



Administration



6th floor
5087m²