

Studi Perancangan kota– Lecture week 13: Urban Slippage

Eka Permanasari

Feby Kaluara

APA TUGAS *URBAN DESIGN(ER)*?

NO
MODERNISM

PROGRESSIVES

MODERNISM
as a source

POST MODERNISTS

SENSIBILITY OF
ENVIRONMENTAL

NEW URBANISTS

*“Urban design is ready for an explosion of **fresh forms**, inspired by the democratic roots of the critique of modernist urbanism, by a deeply **ecological sensibility**, by a fond embrace of the **pluralist character of our culture**, and by a critical incorporation of the new and inescapably transformative technologies of electronic adjacency.”*

--M. Sorkin

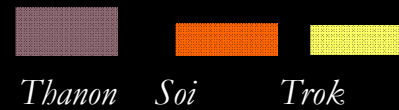
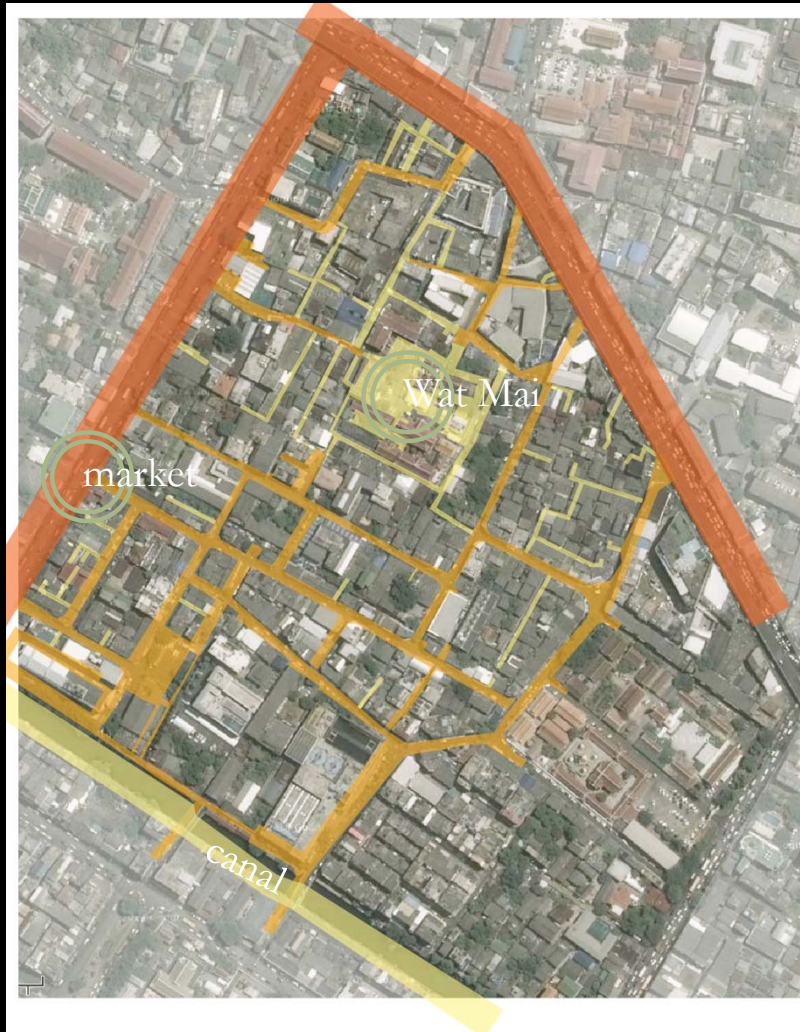
SMOOTH AND STRIATED STREETSAPES IN BANGKOK

- Struktur sosial: hirarkis
- *Woon wai* dianggap sebagai keadaan mengganggu, tidak stabil yang mengacaukan tatanan sosial. Namun, di saat yang sama kondisi nyata ruang kota di Thailand justru membingungkan: “*urban regulations are widely transgressed and...can be very confusing*”
- Ide dan kebudayaan baru seringkali membentuk layer dan penjajaran (*juxtapose*) ketimbang menggantikan ide dan kebudayaan yang sudah ada.


*SMOOTH
SPACE?*

*STRILATED
SPACE?*

Ban Panthom



PUBLIC/PRIVATE?



Semakin ke dalam, semakin tidak jelas batasan ruangnya.

Batasan antara ruang publik dan privat selalu bernegosiasi