

DEMOKRASI DAN POLITIK DI RUANG PUBLIK

STUDI PERANCANGAN KOTA
PERTEMUAN 9

Paths to Democracy

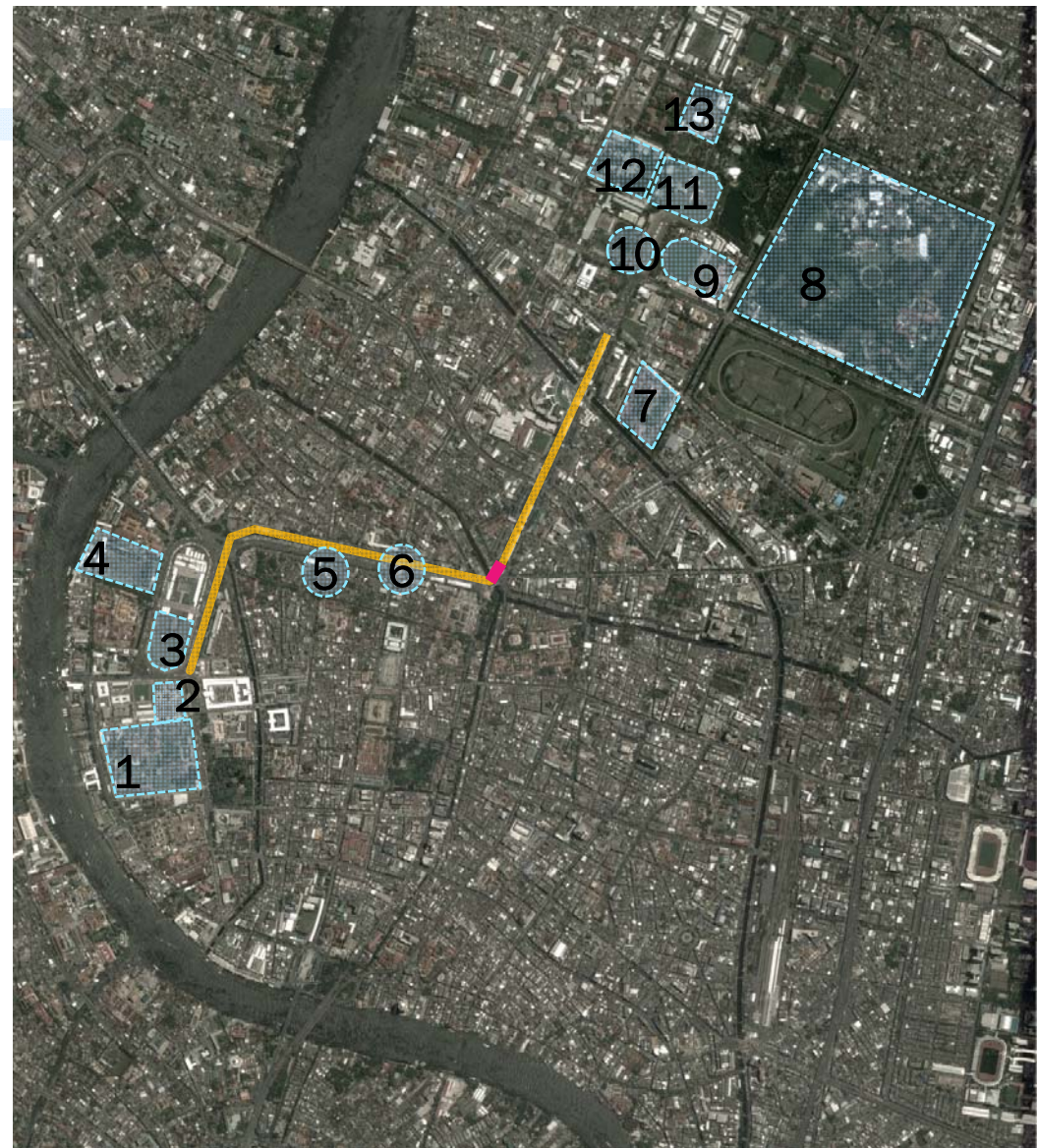
(chapter 7 of *Framing Places: Mediating power in Built Form*)

by Kim Dovey




THE ROYAL ROAD


1. Grand Palace
 2. The Emerald Buddha Temple
 3. Sanam Luang
 4. Thammasat University
 5. October 14 Memorial
 6. Democracy Monument
 7. Government House
 8. Suan Chitralada Palace
 9. Military Headquarter
 10. Royal Plaza
 11. Throne Hall
 12. Dusit Palace
 13. Parliament
- Ratchadamnoen Avenue
- Paan Fa Bridge




THE PEOPLE'S PATH

October, 1973

 Pawai dari Sanam Luang ke Democracy Monument

 Pada 14 Oktober terjadi bentrokan di Chitralada Palace

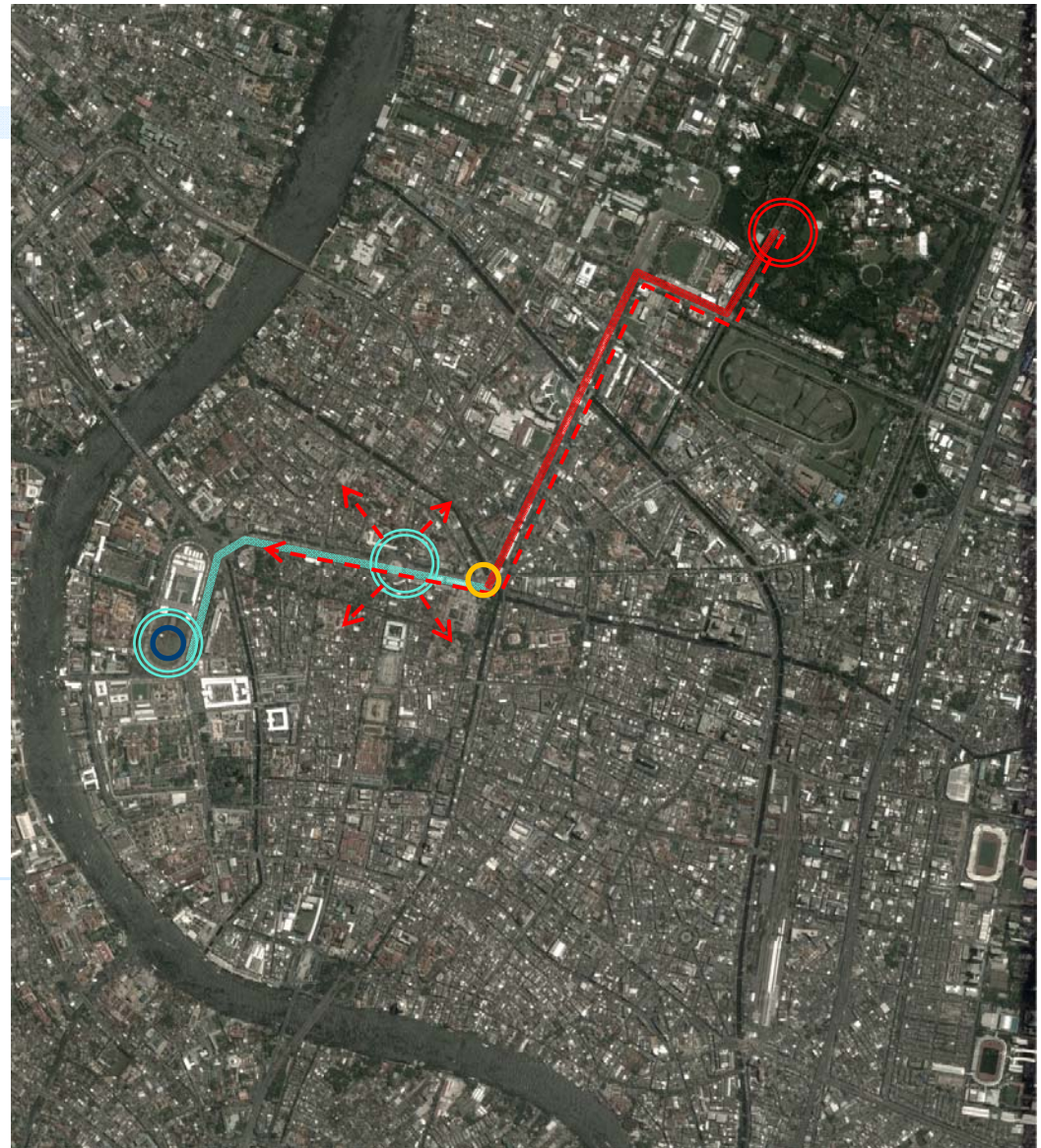
-> Ekspansi serangan militer

 Upacara kematian dan kremasi

 "peaceful protest"


 "confusion"


 Paan Fa Bridge




THE PEOPLE'S PATH

Post 1973- October, 1976

 Setelah kerusuhan 1973,
Parliament dibangun—
"barely visible"

 Protes di Thammasat dan
Sanam Luang atas
kembalinya mantan
pimpinan militer

 Pembunuhan masal.
Tidak ada upacara
kremasi

 Ratchadamnoen Avenue

